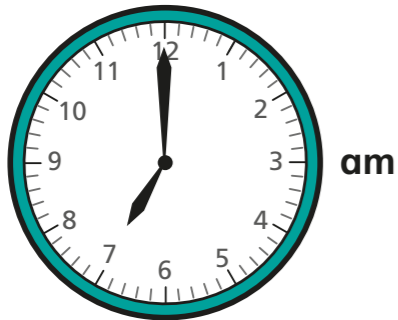


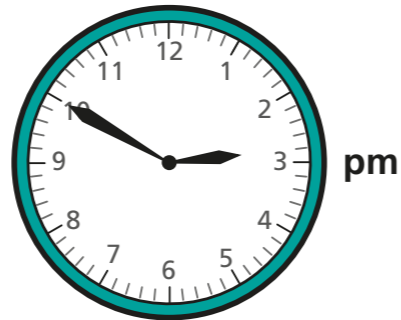
Analogue to digital – 12 hour

1 Is the time shown on the clock in the morning or the afternoon?
Sort the clocks into the table.

Clock A



Clock D



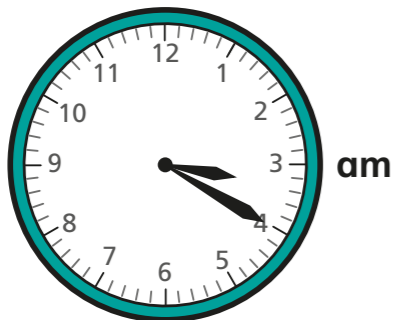
Clock B



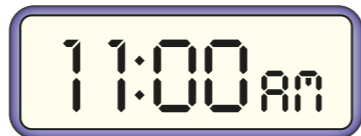
Clock E



Clock C



Clock F

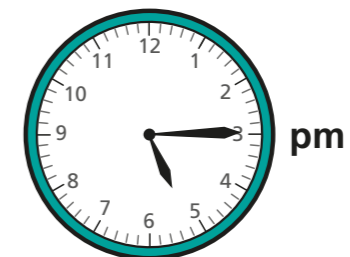


Morning	Afternoon
A C F	B D E

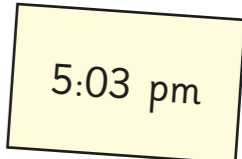
2 Complete the table by drawing hands on the analogue clock or writing the 12-hour digital time.

Analogue	Digital
pm	3:50 pm
	3:10 pm
	6:30 am
am	7:45 am

3



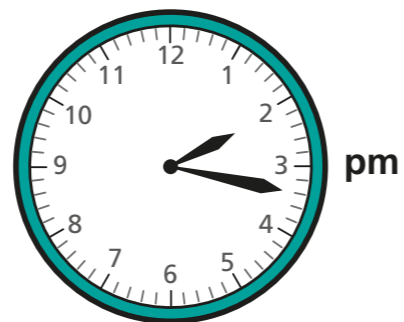
Ron is writing the time in 12-hour digital format.



What mistake has Ron made?

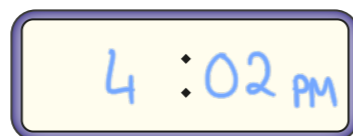
He thinks the minute hand pointing at 3 means 3 minutes past when actually it means 15 minutes past.

- 4 Esther leaves her house at this time.



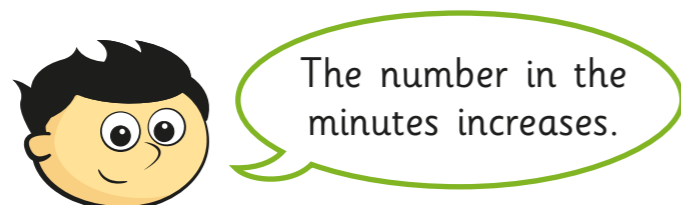
It takes her 1 hour and 45 minutes to get to her friend's house.

Write the time she arrives in 12-hour digital format.



- 5 Jack and Annie are looking at what happens when you add 50 minutes to a time in the 12-hour digital format.

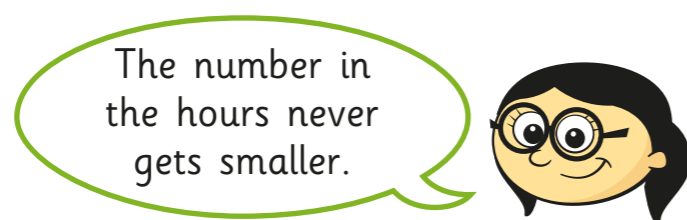
a)



Is Jack's statement always, sometimes or never true?

Sometimes

b)



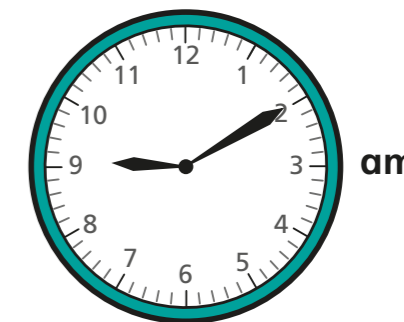
Is Annie's statement always, sometimes or never true?

Sometimes

Compare answers with a partner.



- 6 Huan is getting the bus into town. Buses start running at 6:30 am. They arrive every 22 minutes. Huan is ready to leave at the time shown on the clock. When will the next bus arrive?



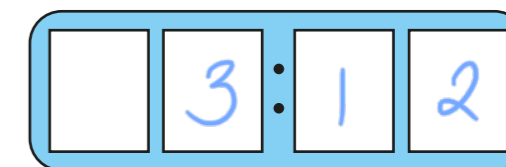
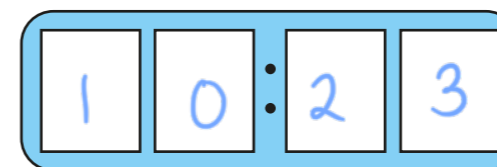
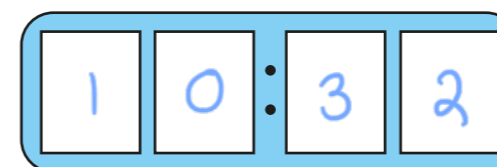
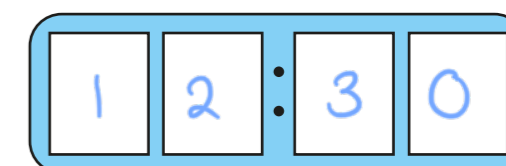
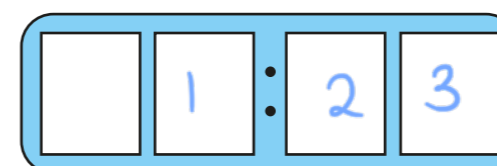
9:26 am

- 7 Using the digit cards once only each time, show six different times that could be shown on a 12-hour digital clock.

You do not need to use all the cards every time.



e.g.



Are there any other possible answers?

